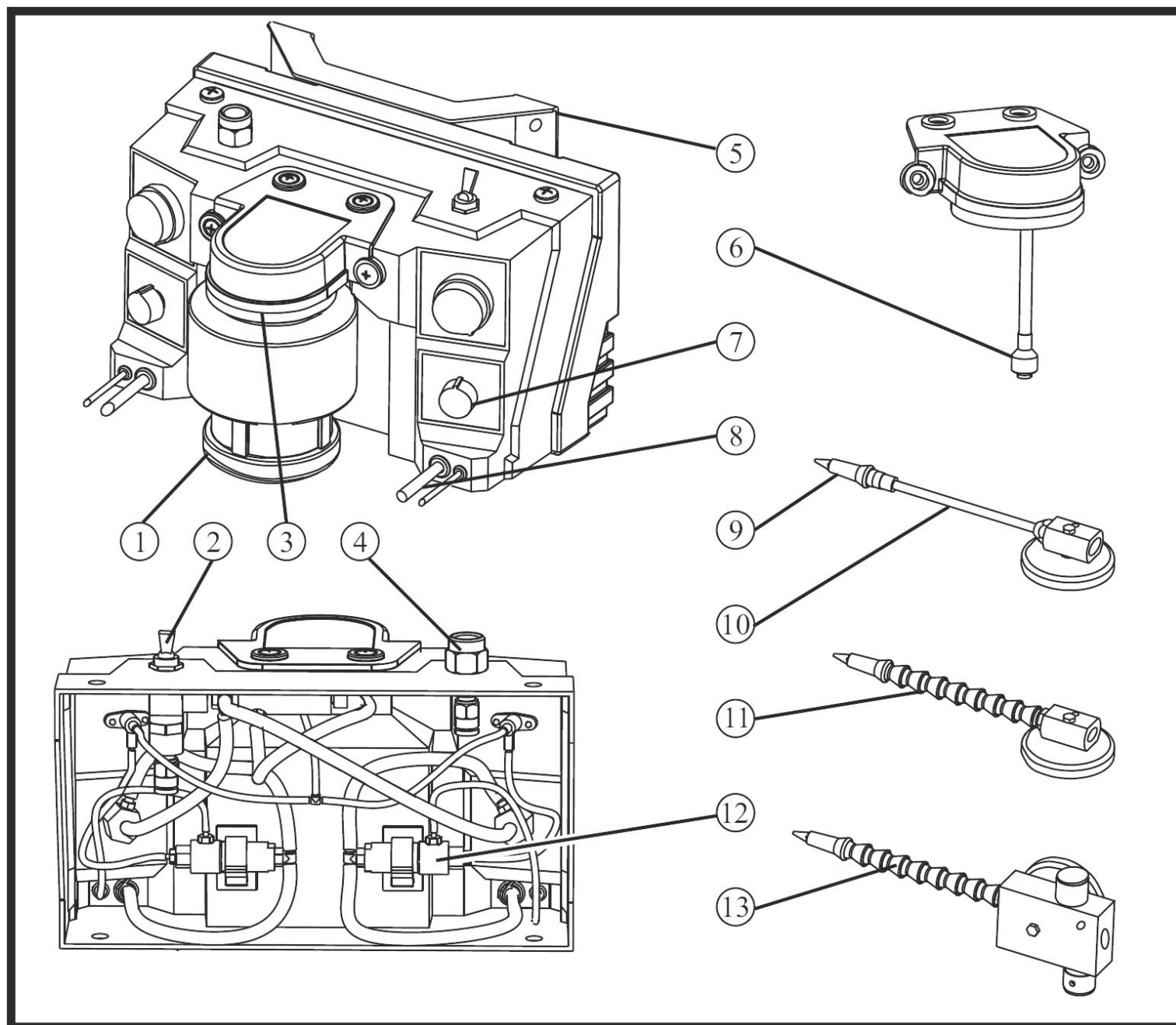


TRICO MD-1200 Service Parts

Note: Some individual parts may not be available. Items requiring factory calibration and testing are not recommended for customer installation. If you require any item not listed here please contact us for assistance.



Item	Description	Part No.	Item	Description	Part No.
1	Reservoir	12761R	8	Plastic Dual Line	66233R
2	Air Switch & Regulator Assy.	21830-2	9	Nozzle Tip	20024R
3	Reservoir "O" Ring	12782R	10	Copper Nozzle Assembly	30810
4	Air Inlet Fitting	12748R	11	Plastic Nozzle Assembly	30809
5	Mounting Bracket	12776R	12	Anti-Siphon Valve	12767R
6	Liquid Filter	12753R	13	Control Module Assembly	21836R
7	Air Knob	12759R			